

- ✓ Quadruple bearing system
- ✓ Highest precision and quality
- ✓ Seal failure warning, through weep holes
- ✓ Sealed stainless steel bearings
- ✓ Carbide seals

### Application

High pressure/rpm, thrust and radial force, self rotating applications, surface cleaners, parts washers



#### TECHNICAL DATA

**Pressure** DYT: 5000 psi (35 MPa)  
DYU: 7300 psi (50 MPa)

**Temperature** 250°F

**RPM** max. 2'000 rpm

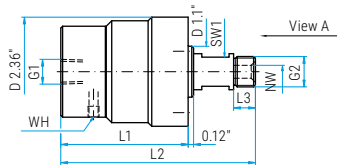
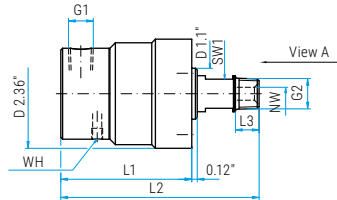
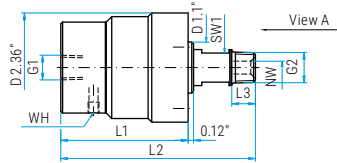
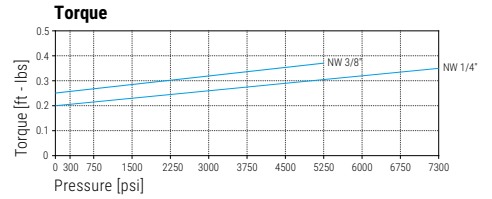
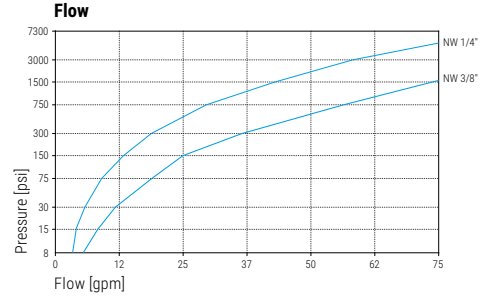
**Body** stainless steel

**Inner part** stainless steel

**Seal** carbide

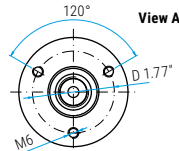
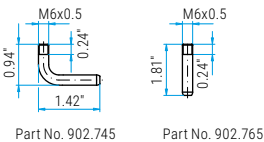
**Bearing** 2x radial ball bearings  
2x thrust ball bearings

**Throughput medium** pH 3 - 12  
filtered 10 microns  
compressed air (290 psi)



WH (weep hole)

Optional: Pipes for weep hole



#### DYT

Part No.	G1 (F)	G2 (M)	NW	SW1	L1	L2	L3	Weight
59.051	1/4" NPTF	1/4" NPTM	1/4"	0.63	2.76	4.21	0.39	51.7 oz
59.053	1/4" NPTF	3/8" NPTM	1/4"	0.63	2.76	4.21	0.43	51.7 oz
59.063	1/4" NPTF	G3/8" M	1/4"	0.63	2.76	4.21	0.47	50.1 oz
59.151	3/8" NPTF	1/4" NPTM	1/4"	0.63	2.83	4.29	0.39	53.7 oz
59.153	3/8" NPTF	3/8" NPTM	1/4"	0.63	2.83	4.29	0.43	53.7 oz
59.163	3/8" NPTF	G3/8" M	1/4"	0.63	2.83	4.29	0.47	49.9 oz
59.653	3/8" NPTF	3/8" NPTM	3/8"	0.63	2.83	4.29	0.43	53.7 oz
59.663	3/8" NPTF	G3/8" M	3/8"	0.63	2.88	4.36	0.48	53.7 oz

#### DYT 90°

Part No.	G1 (F)	G2 (M)	NW	SW1	L1	L2	L3	Weight
59.351	1/4" NPTF	1/4" NPTM	1/4"	0.63	3.83	4.29	0.47	45.9 oz
59.363	1/4" NPTF	G3/8" M	1/4"	0.63	3.83	4.29	0.47	45.9 oz
59.453	3/8" NPTF	3/8" NPTM	1/4"	0.63	2.83	4.29	0.43	53.7 oz
59.463	3/8" NPTF	G3/8" M	1/4"	0.63	2.83	4.29	0.47	50.6 oz
59.902	3/4" NPTF	G3/8" M	3/8"	0.63	3.62	5.08	0.47	61.7 oz

#### DYU (7300 psi)

Part No.	G1 (F)	G2 (M)	NW	SW1	L1	L2	L3	Weight
59.168	3/8" NPTF	G3/8" M	1/4"	0.63	2.83	4.29	0.43	50.7 oz

36.905	DYT Seal kit NW 1/4"
36.906	DYT Seal kit NW 1/4" + adhesive
36.908	DYT Seal kit NW 3/8"
36.909	DYU Seal kit NW 1/4" (7300 psi)

59.911	DYT/DYU Bearing kit NW 1/4" + 3/8"
--------	------------------------------------

Legend

M.. = metric thrust, ..M = male, F = female, G = gas pipe thrust, R = gas pipe thrust conival, QV = quick connects  
SV = profile ring fitting, D = diameter, L = length, NW = nominal width, SW = wrench size